

Kapitel D – Disassembly and Repair.

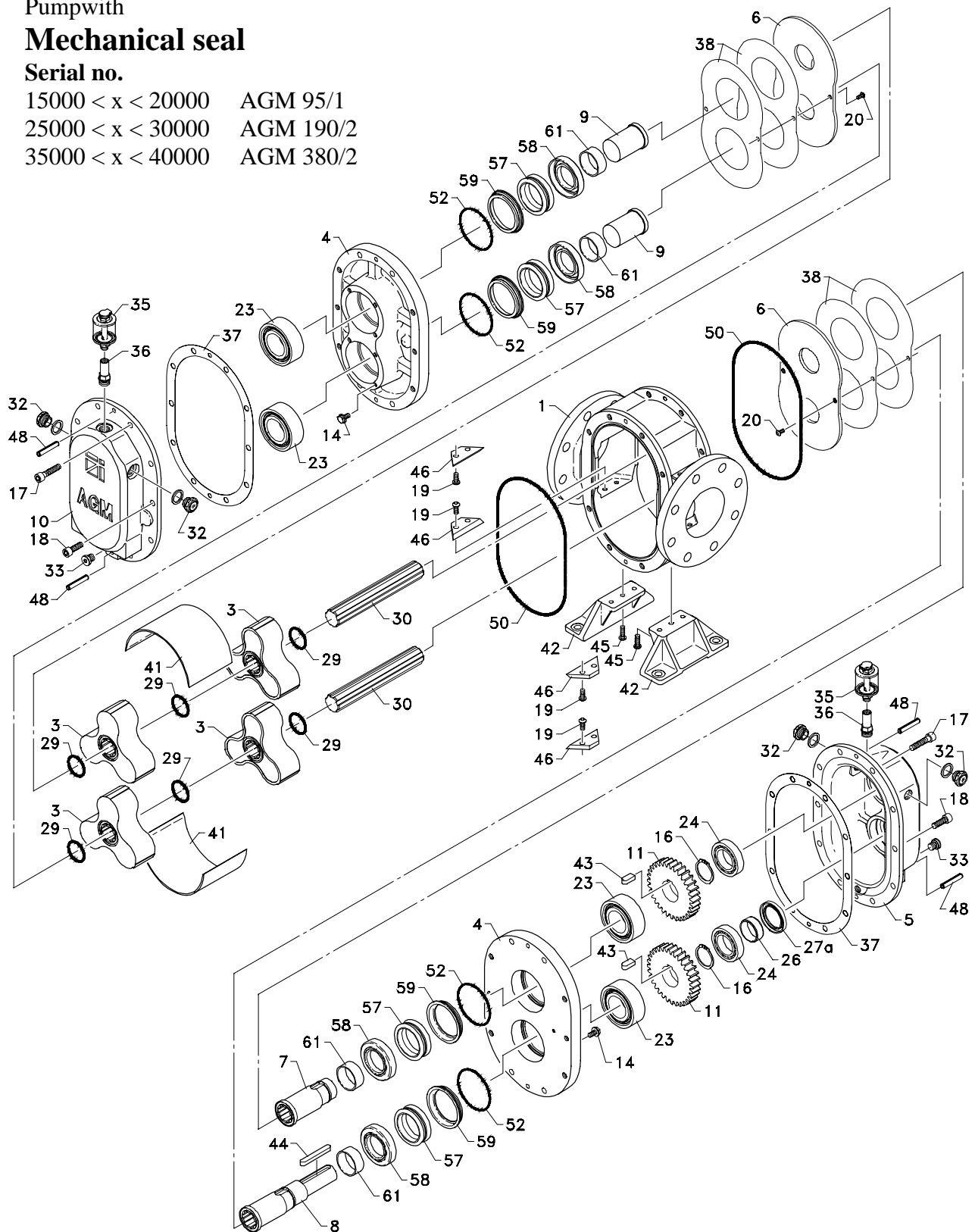
Sparepartsdrawing AGM pump type 95/1 -190/2- 380/4

Pumpwith


Mechanical seal

Serial no.

15000 < x < 20000	AGM 95/1
25000 < x < 30000	AGM 190/2
35000 < x < 40000	AGM 380/2




Spare parts list for AGM lobe rotor pumps type 95/1 - 190/2 - 380/4

Pos	Description:																Code no.
		AGM 95 / 1 Lipseal	AGM 95 / 1 Mech. seal	AGM 95 / 1 Chrome + Mech. seal	AGM 95 / 1 Stainless steel + Mech. seal	AGM 95 / 1 Stainless steel + Lipseal	AGM 190/2 Lipseal	AGM 190/2 Mech. seal	AGM 190/2 Chrome + Mech. seal	AGM 190/2 Stainless steel + Mech. seal	AGM 190/2 Stainless steel + Lipseal	AGM 380/4 Lipseal	AGM 380/4 Mech. seal	AGM 380/4 Chrom + Mech. seal	AGM 380/4 Stainless steel + Mech. seal	AGM 380/4 Stainless steel + Lipseal	
1	Pump housing 95/1	1	1	1	1	1											23270005
1	Pump housing 190/2						1	1	1	1	1						23270006
1	Pump housing 380/4											1	1	1	1	1	23270007
3	3 - bladed turbine	2	2	2	2	2	4	4	4	4	4	8	8	8	8	8	23270015
4	Bearing cap, draw	2	2	2	2	2	2	2	2	2	2	2	2	2	2	2	23272020
5	End cap, draw	1	1	1	1	1	1	1	1	1	1	1	1	1	1	1	23272025
6	Wearplate standard	2	2				2	2				2	2				23270027
6	Wearplate hardchrome			2					2					2			23270032
6	Wearplate AISI 316				2	2				2	2				2	2	23270031
7	Short shaft	1	1	1	1	1	1	1	1	1	1	1	1	1	1	1	23272035
8	Long shaft	1	1	1	1	1	1	1	1	1	1	1	1	1	1	1	23272040
9	Back-end shaft	2	2	2	2	2	2	2	2	2	2	2	2	2	2	2	23272045
10	End cap, free-end	1	1	1	1	1	1	1	1	1	1	1	1	1	1	1	23272010
11	Gear wheel (2 pcs.)	2	2	2	2	2	2	2	2	2	2	2	2	2	2	2	23272055
14	Tensilock screw M8x16	16	16	16	16	16	16	16	16	16	16	16	16	16	16	16	23270070
16	Seeger circlip ring f / shaft	2	2	2	2	2	2	2	2	2	2	2	2	2	2	2	23270080
17	Allen bolt – end cover/housing	16	16	16	16	16	16	16	16	16	16	16	16	16	16	16	23270085
18	Allen bolt – end cover	4	4	4	4	4	4	4	4	4	4	4	4	4	4	4	23270090
19	Allen bolt – clamp	4	4	4			8	8	8			12	12	12			23270095
19	Allen bolt M8x20 AISI 316 - clamp				4	4				8	8				12	12	23270095-1
20	Allen bolt M6x12 - wearplate	4	4	4			4	4	4			4	4	4			23270100
20	Allen bolt M6x12 AISI 316 – wearplate				4	4				4	4				4	4	23270101
23	Angle bearing 32098TVH	4	4	4	4	4	4	4	4		4	4	4	4		4	23270115
24	Step bearing 6008	2	2	2	2	2	2	2	2	2	2	2	2	2	2	2	23270120
26	Inner ring JR40-45-17 FAG	1	1	1	1	1	1	1	1	1	1	1	1	1	1	1	23270127
27a	Oil sealing ring (1999 -) 45X62X7	1	1	1	1	1	1	1	1	1	1	1	1	1	1	1	23272430
27b	Oil sealing ring (- 1999) 45X60X7	1	1	1	1	1	1	1	1	1	1	1	1	1	1	1	23270130
29	O-ring 37, 68x3,53 (R4150)	4	4	4	4	4	6	6	6	6	6	10	10	10	10	10	23270140
30	Spline shaft f / 95/1	2	2	2	2	2											23270295
30	Spline shaft f / 190/2						2	2	2	2	2						23270296
30	Spline shaft f / 380/4											2	2	2	2	2	23270297
32	Oil level gauge ½" RG	4	4	4	4	4	4	4	4	4	4	4	4	4	4	4	23270155
33	Closing plug 1/4" RG	2	2	2	2	2	2	2	2	2	2	2	2	2	2	2	23270170
35	Bottle oiler	2	2	2	2	2	2	2	2	2	2	2	2	2	2	2	23272001
36	Nippel f/ bottle oiler (Messing)	2	2	2	2	2	2	2	2	2	2	2	2	2	2	2	23270182
37	Endcap gasket	2	2	2	2	2	2	2	2	2	2	2	2	2	2	2	23270180



Spare parts list for AGM lobe rotor pumps type 95/1 - 190/2 - 380/4

Pos:	Description:															Code no.	
		AGM 95 / 1 Lipseal	AGM 95 / 1 Mech.seal	AGM 95 / 1 Chrome + Mech. seal	AGM 95 / 1 Stainless steel + Mech. seal	AGM 95 / 1 Stainless steel + Lipseal	AGM 190/2 Lipseal	AGM 190/2 Mech. seal	AGM 190/2 Chrome + Mech. seal	AGM 190/2 Stainless steel + Mech. seal	AGM 190/2 Stainless steel + Lipseal	AGM 380/4 Lipseal	AGM 380/4 Mech. Seal	AGM 380/4 Chrome + Mech. Seal	AGM 380/4 Stainless steel + Mech. seal		AGM 380/4 Stainless steel + Lipseal
38	Wearplate gasket	4	4	4	4	4	4	4	4	4	4	4	4	4	4	4	23270185
41	Wear lining 95/1 (standard)	2	2														23270285
41	Wear lining 190/2 (standard)						2	2									23270286
41	Wear lining 380/4 (standard)											2	2				23270287
41	Wear lining 95/1 (Chrome)			2													23270280
41	Wear lining 190/2 (Chrome)							2									23270281
41	Wear lining 380/4 (Chrome)												2				23270282
41	Wear lining 95/1 (AISI 316)				2	2											23270250
41	Wear lining 190/2 (AISI 316)								2	2							23270251
41	Wear lining 380/4 (AISI 316)													2	2		23270252
42	Pump support 95/1	2	2	2	2	2											23270205
42	Pump support 190/2						2	2	2	2	2						23270206
42	Pump support 380/4											2	2	2	2	2	23270207
43	Key "AB" 12x8x26	2	2	2	2	2	2	2			2	2	2	2	2	2	23270210
44	Key A10x8x75	1	1	1	1	1	1	1			1	1	1	1	1	1	23270215
45	Allen bolt – pump support	4	4	4	4	4	6	6	6	6	6	8	8	8	8	8	23270220
46	Clamp 95/1	4	4	4													23270225
46	Clamp 190/2						4	4	4								23270226
46	Clamp 380/4											4	4	4			23270227
46	Clamp 95/1 AISI 316				4	4											23270260
46	Clamp 190/2 AISI 316									4	4						23270261
46	Clamp 380/4 AISI 316														4	4	23270262
48	Cylindric pipe pin 8x50	4	4	4	4	4	4	4	4	4	4	4	4	4	4	4	23270235
50	O-ring f/ pumphousing	2	2	2	2	2	2	2	2	2	2	2	2	2	2	2	23270008
51	Lining for lip seal	4				4	4					4	4				23272385
52	O-ring ø80x2,5 NBR	4	4	4	4	4	4	4	4	4	4	4	4	4	4	4	23272411
53	Seeger circlip ring l65	4				4	4					4	4				23270075
54	Shim	4				4	4					4	4				23270060
55	Lip seal – oil sealing	8				8	8					8	8				23270135
56	Shim ø45/50x30	4				4	4					4	4				23272420
57	Mech. seal 55,5x70x22		4	4	4			4	4	4			4	4	4		23272400
58	Rotating seal support		4	4	4			4	4	4			4	4	4		23272405
59	Stationary seal support		4	4	4			4	4	4			4	4	4		23272410
61	Bush JR ø45/50x20		4	4	4			4	4	4			4	4	4		23272415

