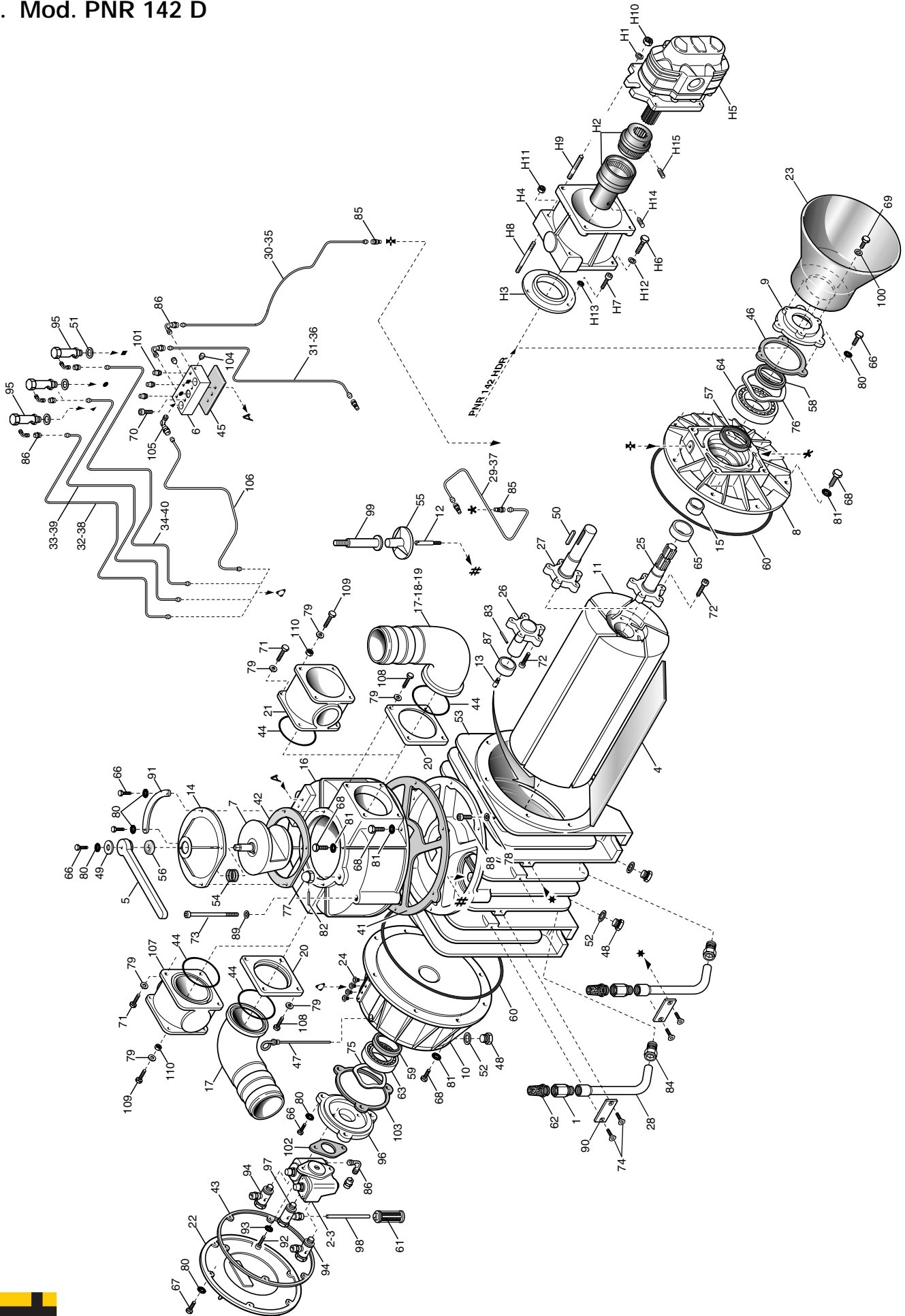


9.5. Mod. PNR 142 D



Parts list PNR 142 D

Pos. Code	Description	Quantity
1	1493300200 Air injection valve PNR 142	2
2	4024250000 Automatic lubricating pump (cw rotation)	1
3	4024250500 Automatic lubricating pump (ccw rotation)	1
4	1601605200 Vane PNR 142	5
5	1605500100 Handle PNR 142	1
6	1608100200 Distributor PNR 142	1
7	1608500700 Conveyor PNR 142	1
8	1610508100 Flange PNR 142 D	1
9	1610508200 Flange R-PNR-PNE 102-122-142 D	1
10	1612500900 Oil tank PNR 142	1
11	1621503200 Rotor PNR 142	1
12	1622002500 Check valve shaft PNR 142	1
13	1622002600 Shaft M10	1
14	1623500300 Conveyor cap PNR 142	1
15	1626001100 Bushing PNR 142 D	1
16	1627501100 Manifold PNR 142	1
17	1627102400 Conveyor Ø 100	1-2
18	1627102700 Conveyor Ø 80	1
19	1627102800 Conveyor Ø 76	1
20	1610101100 Conveyor Flange	2
21	1627102500 Conveyor with safety valve connection	(1)
22	1640101000 Oil tank cap PNR 142	1
23	1642600100 Drive shaft protection	1
24	1642600000 Pipeline protection	4
25	1650012900 Front splined shaft PNR 142 D	1
26	1650013000 Rear shaft PNR 142	1
27	1650013100 Front smooth shaft PNR 142 D	1
28	1663014000 Air injection valve pipe 1/2" PNR 142	2
29	1663009500 Front lubricating line (housing) PNR 142 D rh/M lh	1
30	1663016510 Front lubricating line (flange) PNR 142 D rh	1
31	1663016310 Rear lubricating line PNR 142 D rh/M lh	1
32	1663034500 Rear oil dripper lubricating line PNR 142 D rh/M lh	1
33	1663034600 Centering oil dripper lubric. line PNR 142 D rh/M lh	1
34	1663034700 Front oil dripper lubricating line PNR 142 D rh/M lh	1
35	1663026010 Front lubricating line (flange) PNR 142 D lh	1
36	1663016610 Rear lubricating line PNR 142 D lh/M rh	1
37	1663025700 Front lubricating line (housing) PNR 142 D lh/M rh	1
38	1663034200 Rear oil dripper lubricating line PNR 142 D lh/M rh	1
39	1663034300 Centering oil dripper lubric. line PNR 142 D lh/M rh	1
40	1663034400 Front oil dripper lubricating line PNR 142 D lh/M rh	1
41	1680608300 Manifold gasket PNR 142	1
42	1680702500 Conveyor gasket PNR 142	1
43	1680702700 Oil tank gasket PNR 142	1
44	4022200310 OR 6362	2
45	1680703700 Distributor gasket PNR 142	1
46	1680707300 Flange gasket PNR 142 D	1
47	1683600300 Oil stick	1
48	1684000000 Plug G3/8	3
49	1685002800 Washer 30x8,5x4	1
50	4026501006 Tab 12x8x56	1
51	1685100000 Alu washer 14x20x1,5	3
52	1685100200 Alu washer 17x22x1,5	3
53	1687501900 Housing PNR 142 D	1
54	1691000200 Conveyor spring	1
55	1693500000 Check valve PNR 142	1
56	4022200030 Seal 41x27x10	1
57	4022200113 Seal 70x55x15	1
58	4022200044 Seal 65x45x8	1
59	4022200111 Seal 72x48x15	1
60	4022200311 OR 4975	2
61	4022300001 Nylon filter Ø6	1
62	4022301004 Silencer-filter 3/4"	2
63	4023100040 Bearing 6308	1
64	4023100046 Bearing 6309	1
65	4023130035 Bushing 55x45x22	1
66	4026100408 Screw M8x20	11
67	4026100410 Screw M8x25	6
68	4026100510 Screw M10x25	21

Pos. Code	Description	Quantity
69	4026101409 Screw M8x12 galvanized	3
70	4026120303 Screw M6x20	2
71	4026102807 Screw M 8x25	(4)
72	1672001600 PNR rotor screw M10	10
73	4026120519 Screw M10x110	2
74	4026155605 Screw M6x16	4
75	4026300020 Compensation ring Ø90	1
76	4026300025 Compensation ring Ø100	1
77	4026322006 Nut M16	1
78	1685100800 Alu washer 8x14x1,5	1
79	4026350606 Grower washer M8	8(12)
80	4026350909 Washer M8	17
81	4026350910 Washer M10	21
82	4026414611 Pin 3x24	1
83	4026414617 Pin 3x40 (*)	1
84	4026701301 Fitting G1/2	2
85	4026702000 Fitting Ø4-1/8	4
86	4026706000 Fitting 90° Ø4-1/8	6
87	4023130020 Bushing 48x40x22	1
88	4026120400 Screw M8x12	1
89	4026350608 Grower washer M10	2
90	1681006600 Bracket	2
91	1681005300 Plate vac-press PNR 142	1
92	4026120304 Screw M6x16	2
93	4026350908 Washer M6	2
94	4026706101 Fitting Ø4-1/8	2
95	1401200700 Oil dripper automatic lubrication	3
96	1610508500 Automatic lubrication pump flange R-PNR-PNE	1
97	4026706104 Fitting Ø6-1/8	1
98	1663041100 Suction line for aut. lubricating pump PNR 102-122-142	1
99	1672001200 Check valve stop	1
100	4026356002 Flat washer M8 galvanized	3
101	4022301000 Oil block filter G 1/8	3
102	1680609700 Oil pump gasket	1
103	1680609800 Oil pump flange gasket	1
104	4026910601 Plug G1/8	2
105	4026706003 Fitting 90° G1/8 ø6	1
106	1663043700 Oil drain line PNR 142 D dx	1
	1663043800 Oil drain line PNR 142 D sx	1
107	1627102600 Conveyor	(1)
108	4026102801 Screw M8x35	8
109	4026102810 Screw M8x40	(4)
110	4026308005 Nut M8	(4)

(*): on models with ccw (left hand) rotation

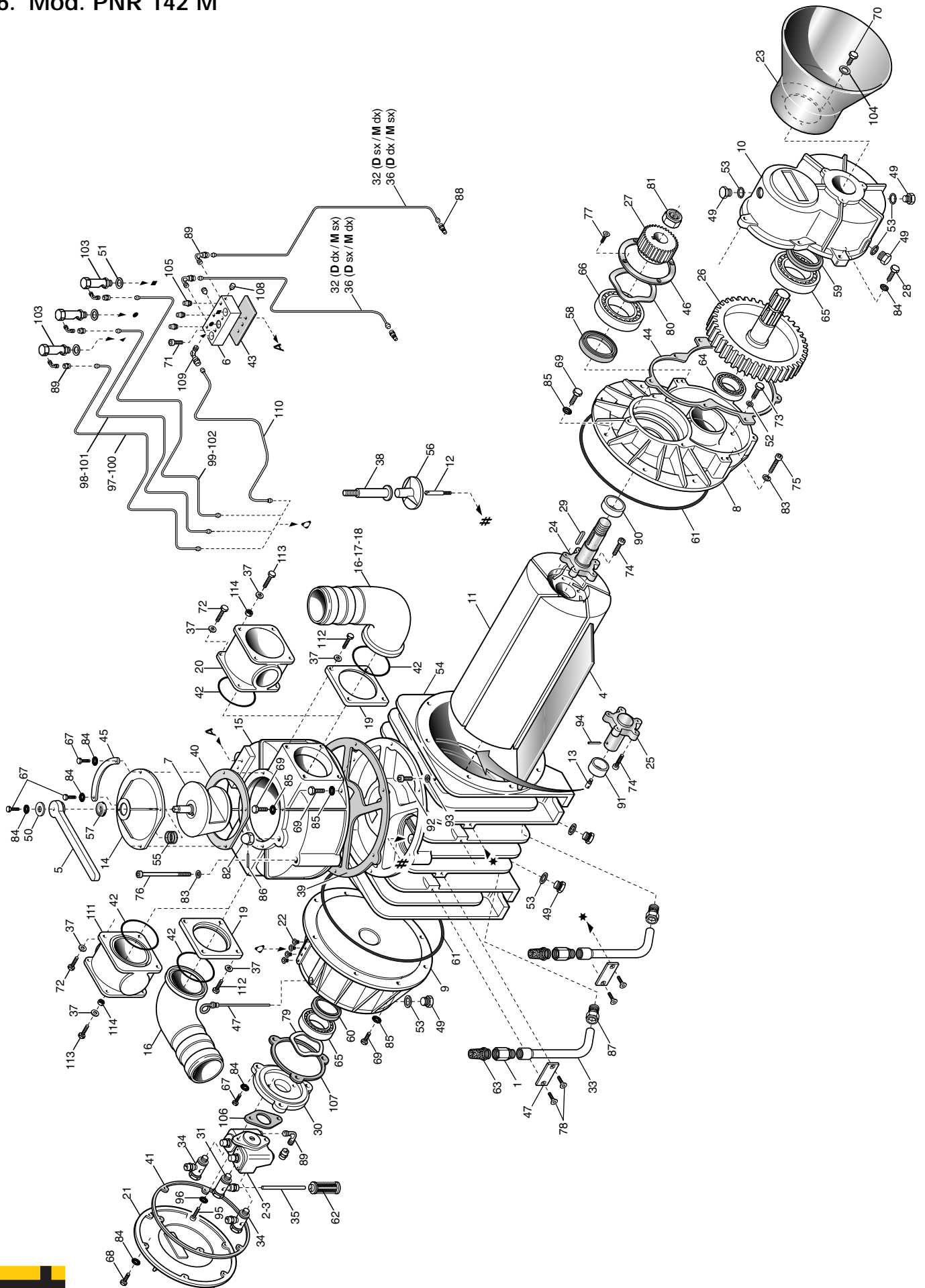
PNR 142 HDR

Pos. Code	Description	Quantity
H1	4026350610 Grower washer M14	4
H2	1470102300 Coupling PNR 102-122-142 HDR	1
H3	1610021600 Centering flange PNR-PNE 102-122-142 HDR	1
H4	1612501000 Bracket PNR-PNE ... HDR	1
H5	4024107004 Motor PNR 142 HDR	1
H6	4026107313 Screw M12x40	2
H7	4026120403 Screw M8x20	3
H8	4026171211 Stud screw M12x80	2
H9	4026171304 Stud screw M14x40	4
H10	4026308008 Nut M14 galvanized	4
H11	4026305508 Nut M12	2
H12	4026350609 Washer grower M12	2
H13	4026350909 Washer M8	3
H14	4026136003 Dowel pin M8x8	1
H15	4026136006 Dowel pin M8x14	1
	1892002300 Gaskets kit PNR 142 D	1

Note: between brackets quantity referred to the conveyor with safety valve connection built.



9.6. Mod. PNR 142 M



Parts list PNR 142 M

Pos. Code	Description	Quantity	Pos. Code	Description	Quantity		
1	1493300200	Air injection valve PNR 142	2	60	4022200111	Seal 72x48x15	1
2	4024250500	Automatic lubricating pump (cw rotation)	1	61	4022200311	OR 4975	2
3	4024250000	Automatic lubricating pump (ccw rotation)	1	62	4022300001	Nylon filter Ø6	1
4	1601605200	Vane PNR 142	5	63	4022301004	Silencer-filter 3/4"	2
5	1605500100	Handle PNR 142	1	64	4023100018	Bearing 6206	1
6	1608100200	Distributor PNR 142	1	65	4023100040	Bearing 6308	2
7	1608500700	Conveyor PNR 142	1	66	4023100046	Bearing 6309	1
8	1610507900	Flange PNR 142 M	1	67	4026100408	Screw M8x20	8
9	1612500900	Oil tank PNR 142	1	68	4026100410	Screw M8x25	6
10	1612503000	Gearbox PNR 142 M	1	69	4026100510	Screw M10x25	18
11	1621503200	Rotor PNR 142	1	70	4026101404	Screw M8x12	3
12	1622002500	Check valve shaft PNR 142	1	71	4026120303	Screw M6x20	2
13	1622002600	Shaft M10	1	72	4026102807	Screw M8x25	(4)
14	1623500300	Conveyor cap PNR 142	1	73	4026120505	Screw M10x25	1
15	1627501100	Manifold PNR 142	1	74	1672001600	PNR rotor screw M10	10
16	1627102400	Conveyor Ø 100	1-2	75	4026120510	Screw M10x50	2
17	1627102700	Conveyor Ø 80	1	76	4026120519	Screw M10x110	2
18	1627102800	Conveyor Ø 76	1	77	4026155505	Screw M5x16	4
19	1610101100	Conveyor flange	2	78	4026155605	Screw M6x16	4
20	1627102500	Conveyor with safety valve connection	(1)	79	4026300020	Compensation ring Ø90	1
21	1640101000	Oil tank cap PNR 142	1	80	4026300025	Compensation ring Ø100	1
22	1642600000	Pipeline protection	4	81	4026306115	Nut M36x3	1
23	1642600100	Drive shaft protection	1	82	4026322006	Nut M16	1
24	1650012800	Front shaft PNR 142 M	1	83	4026350608	Grower washer M10	4
25	1650013000	Rear shaft PNR 142	1	84	4026350909	Washer M8	21
26	1651005200	Gear PNR 142 M	1	85	4026350910	Washer M10	18
27	1651005300	Pinion PNR 142 M	1	86	4026414611	Pin 3x24	1
28	4026100411	Screw M8x30	7	87	4026701301	Fitting G1/2x18	2
29	4026501004	Tab 12x8x45	1	88	4026702000	Fitting Ø4-1/8	4
30	1610508500	Automatic lubrication pump flange R-PNR-PNE	1	89	4026706000	Fitting 90° Ø4-1/8	6
31	4026706104	Fitting Ø6-1/8	1	90	4023130035	Bushing 55x45x22	1
32	1663016310	Rear lubricating line PNR 142 D rh/M lh	1	91	4023130020	Bushing 48x40x22	1
33	1663014000	Air injection valve pipe 1/2" PNR 142	2	92	4026120400	Screw M8x12	1
34	4026706101	Fitting Ø4-1/8	1	93	1685100800	Alu washer 14x8x1,5	1
35	1663041100	Suction line for aut. lubricating pump PNR 102-122-142	1	94	4026414617	Pin 3x40 (*)	1
36	1663016610	Rear lubricating line PNR 142 D lh/M rh	1	95	4026120304	Screw M6x16	2
37	4026350606	Washer grower M8	8(12)	96	4026350908	Washer M6	2
38	1672001200	Check valve stop	1	97	1663034200	Rear oil dripper lubricating line PNR 142 D lh/M rh	1
39	1680608300	Manifold gasket PNR 142	1	98	1663034300	Centering oil dripper lubric. line PNR 142 D lh/M rh	1
40	1680702500	Conveyor gasket PNR 142	1	99	1663034400	Front oil dripper lubric. line PNR 142 D lh/M rh	1
41	1680702700	Oil tank cap gasket PNR 142	1	100	1663034500	Rear oil dripper lubric. line PNR 142 D rh/M lh	1
42	4022200310	OR 6362	2(3)	101	1663034600	Centering oil dripper lubric. line PNR 142 D rh/M lh	1
43	1680703700	Distributor gasket PNR 142	1	102	1663034700	Front oil dripper lubric. line PNR 142 D rh/M lh	1
44	1680707200	Gearbox gasket PNR 142 M	1	103	1401200700	Oil dripper automatic lubrication	3
45	1681005300	Plate vac.-press PNR 142	1	104	4026356002	Flat washer M8 galvanized	3
46	1681006500	Compensation ring bracket	1	105	4022301000	Oil block filter G 1/8	3
47	1681006600	Bracket	2	106	1680609700	Oil pump gasket	1
48	1683600300	Oil stick	1	107	1680609800	Oil pump flange gasket	1
49	1684000000	Plug G3/8	6	108	4026910601	Plug G1/8	2
50	1685002800	Washer 30x8,5x4	1	109	4026706003	Fitting 90° G1/8 ø6	1
51	1685100000	Alu washer 14x20x1,5	3	110	1663043700	Oil drain line PNR 142 D dx	1
52	1685100100	Alu washer 10x16x1,5	1		1663043800	Oil drain line PNR 142 D sx	1
53	1685100200	Alu washer 17x22x1,5	6	111	1627102600	Conveyor	(1)
54	1687501900	Housing PNR 142	1	112	4026102801	Screw M8x35	8
55	1691000200	Conveyor spring	1	113	4026102810	Screw M8x40	(4)
56	1693500000	Check valve PNR 142	1	114	4026308005	Nut M8	(4)
57	4022200030	Seal 41x27x10	1				
58	4022200113	Seal 70x55x15	1				
59	4022200040	Seal 72x40x10	1				

(*): on models with cw (right hand) rotation

1892002400 Gaskets kit PNR 142 D 1

Note: between brackets quantity referred to the conveyor with safety valve connection built.

