

Hunter reservedele

Klik på tekst for at gå direkte til den ønskede side:

Emne **Side**

Hunter:

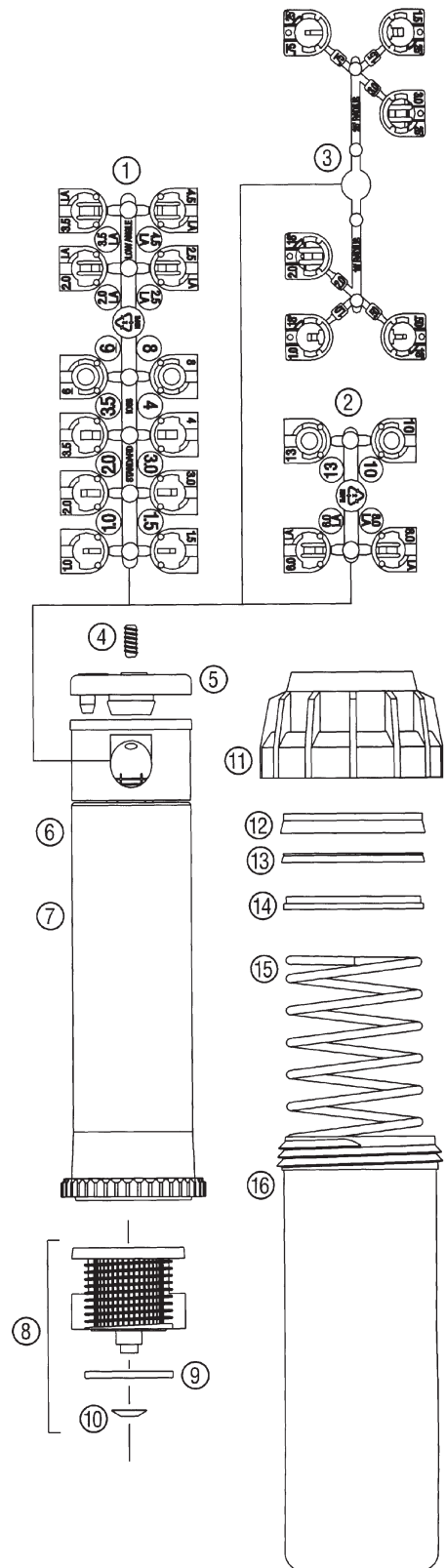
I-20 sprinkler	2
I-25/31 sprinkler	3
ICV 101G / 151G / 201G magnetventil	4
SRC styring	5



Res.dele Hunter I-20

I-20 (4", 6" & 12"): Gear-Driven Sprinklers

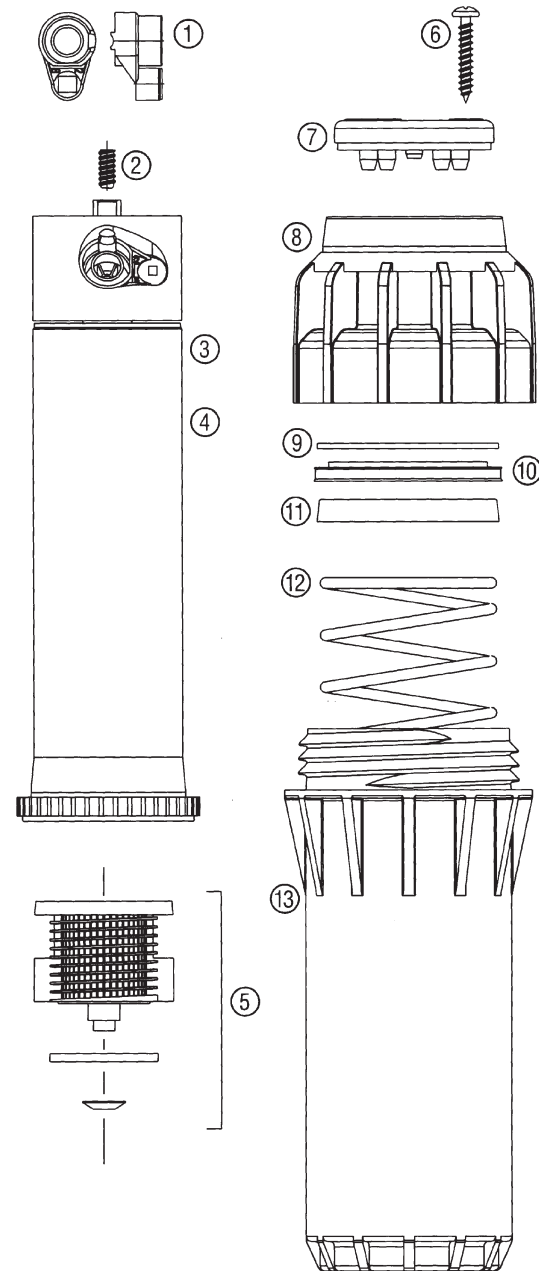
Item	Description	Catalog No.
①	Standard and Low Angle Nozzle Set (12)	356605
②	High Flow Standard & Low Angle Nozzle Set (4)	444800
③	Short Radius Nozzles	466100
④	Universal Screw	120300
⑤	Rubber Cover	
	ADV (Black)	352400
	36V (Black)	352405
	ADS (Black)	352420
	36S (Black)	352425
	ADJ (Black)	352460
	360 (Black)	352465
	ADJ-SS (Black)	352470
	360-SS (Black)	352475
	ARV (Purple)	352410
	3RV (Purple)	352415
	ARS (Purple)	352430
	3RS (Purple)	352435
⑥	Riser Assembly	
	ADV, ARV (4")	361300
	36V, 3RV (4")	362800
	ADV, ARV (6")	434300
	36V, 3RV (6")	472600
	ADV, ARV (12")	404800
	36V, 3RV (12")	404500
⑦	Stainless Steel Riser Assembly	
	ADS, ARS (4")	361200
	36S, 3RS (4")	362900
	ADS, ARS (6")	434400
	36S, 3RS (6")	472700
⑧	Filter Screen/Check Valve Assembly (Black)	142300
⑨	Check Valve Seal	101400
⑩	Retainer Clip	204900
⑪	Body Cap	356000
⑫	Seal Support	102300
⑬	Riser Seal	
	4"	252500
	6"	252500
	12"	181500
⑭	Spring Seat	
	4"	227800
	6"	227800
	12"	189900
⑮	Retraction Spring	
	4"	150600
	6"	460300
	12"	179500
⑯	Pop-Up Body	
	4"	229200
	6"	434700
	12"	404200



Res.dele Hunter I-25/I-31

I-25/31: Gear-Driven Sprinklers

Item	Description		Catalog No.
①	Nozzle Pack (1 each #s 7, 10, 15, 20, 25)		460010
	Nozzles (Bag of 25)	#4 – Yellow	463401
		#5 – White	463402
		#7 – Orange	463403
		#8 – Lt. Brown	463404
		#10 – Lt. Green	463405
		#13 – Lt. Blue	463406
		#15 – Gray	463407
		#18 – Red	463408
		#20 – Dk. Brown	463409
		#23 – Dk. Green	463410
		#25 – Dk. Blue	463411
		#28 – Black	463412
②	Nozzle Retainer Screw		333900
③	Riser Assembly	ADV, ARV	341800
		36V, 3RV	342000
④	Stainless Steel Riser Assembly	ADS, ARS	341900
		36S, 3RS	342100
⑤	Filter Screen/Check Valve Assembly (White) Date Codes 9410 and After – VStat		303700
⑥	Rubber Cover Screw (2 Required)		334000
⑦	Rubber Cover Assembly	I-25 (Black)	344605
		I-31 (Black)	344610
		I-25 (Purple)	344615
		I-31 (Purple)	344620
		I-25 HS (Brown)	344625
		I-31 HS (Brown)	344630
⑧	Body Cap Assembly		341500
⑨	Riser Seal Slip Washer		221800
⑩	Riser Seal		221200
⑪	Spring Seat		221100
⑫	Retraction Spring	Standard Models	300800
		High-Speed Models	221300
⑬	Body	NPT	336405
		BSP	336410
	Obsolete Parts (Not Shown)		Catalog No.
	Filter Screen/Check Valve Assembly (Blue)*		180300
	Stator Orifice Rack (White)*		462452
	Diffuser Pin (White)**		244700
	Model Number Button (Blank)**		252735
	Feature Designation Button (Blank)**		252845
	Screw (Nozzle Retainer and Body Cap)**		120300
	Rubber Cover Screw**		221400



* For Date Codes 9409 & Prior
 ** For Date Codes 9509 & Prior



Agrometer a/s

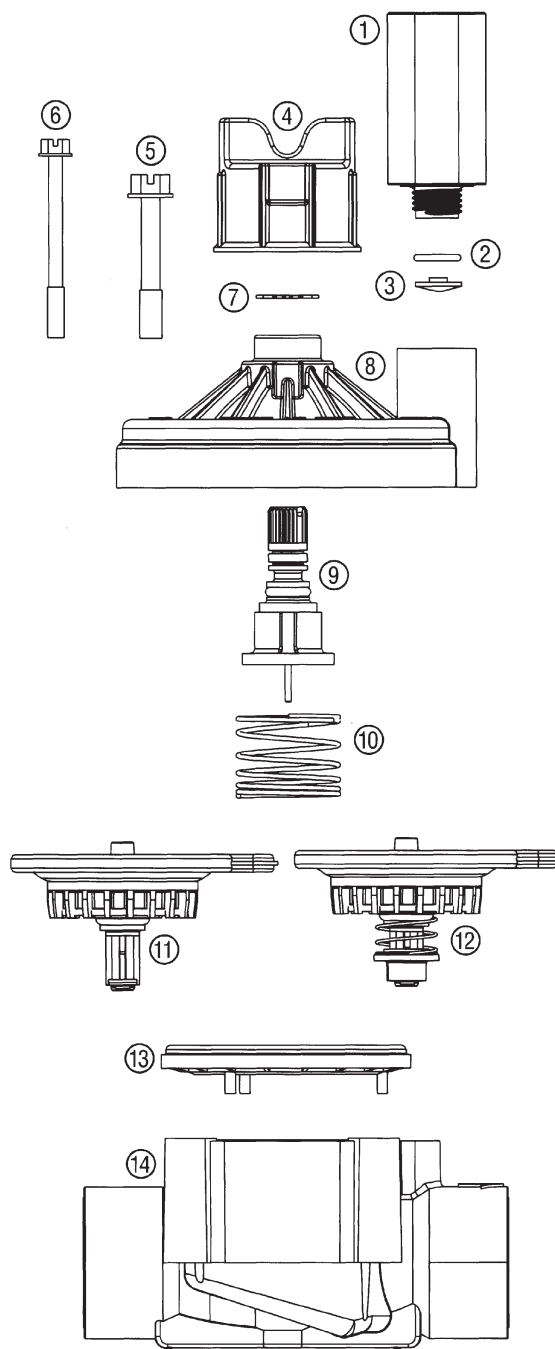
Fælledvej 10 • 7200 Grindsted • Tlf. 76 72 13 00 • Fax 76 72 13 98
 www.agrometer.dk • agrometer@agrometer.dk



Res.dele Hunter ICV 101G/151G/201G

ICV-101G, 151G & 201G: Plastic Valves

Item	Description	Catalog No.
①	Solenoid Assembly (Includes Parts 2 & 3)	AC Solenoid 434100
		DC Solenoid 458200
②	O-Ring	262600
③	Solenoid Seal	364400
④	Flow Control Knob	Black 385900
		Purple 385905
⑤	Bonnet Bolt (1" Model)	386900
⑥	Bonnet Bolt (1½" & 2" Models)	366700
⑦	E-Clip Retainer	1" 387200
		1½" & 2" 371600
⑧	Bonnet Assembly	1" 388000
		1½" & 2" 380600
⑨	Flow Control Assembly	1" 387900
		1½" & 2" 374600
⑩	Spring	1" 386700
		1½" & 2" 365400
⑪	Diaphragm Assembly – Standard	1" 387800
		1½" & 2" 374500
⑫	Diaphragm Assembly with Filter Sentry Mechanism	1" 461503
		1½" & 2" 461818
⑬	Diaphragm Support	1" 385700
		1½" & 2" 365900
⑭	Body	1" NPT 385300
		1" BSP 387605
		1½" NPT 370100
		1½" BSP 374805
		2" NPT 365500
		2" BSP 365505



Res.dele Hunter SRC

SRC: Residential/Light Commercial Controller

Item	Description		Catalog No.
①	Mounting Plate		213354
②	Back Panel Assembly		215473
③	6-Station Face Plate Assembly		349400
	9-Station Face Plate Assembly		444700
④	Dial Knob		217745
⑤	Fuses	Long 1 1/4", 0.75A	142845
		Short 5 x 20 mm, 0.8A	143154
⑥	Door		217389
⑦	Terminal Cover Door		213243
⑧	Transformer 120/24V 20VA Plug-In	(U.S.)	153263
	Transformer 220VAC/50Hz	(Export)	153400
	Owner's Manual (English)		LIT-185
	International Labeling Kit <i>Includes Faceplate Label, Door Instruction Sticker and Owner's Manual</i>	French	INT-260
		Spanish	INT-261
		Italian	INT-262
		German	INT-263
		Portuguese	INT-264

