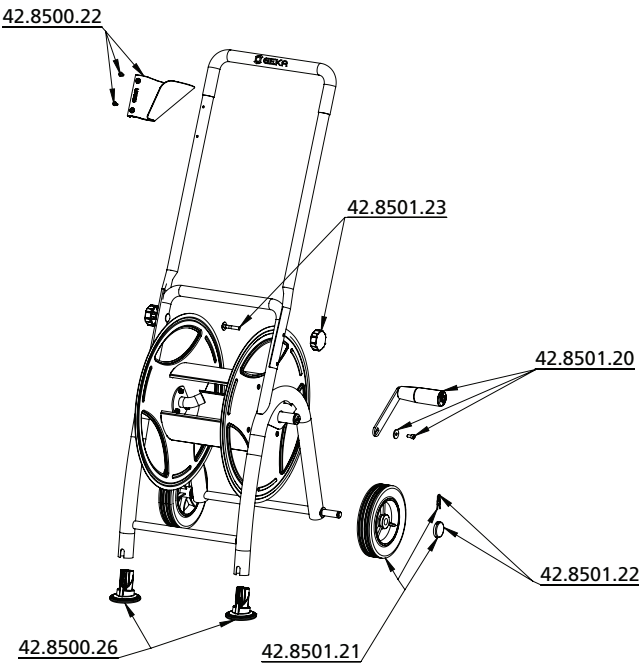


GEKA Slangevogn

Reservedelsoversigt

P25

GEKA Slangevogn



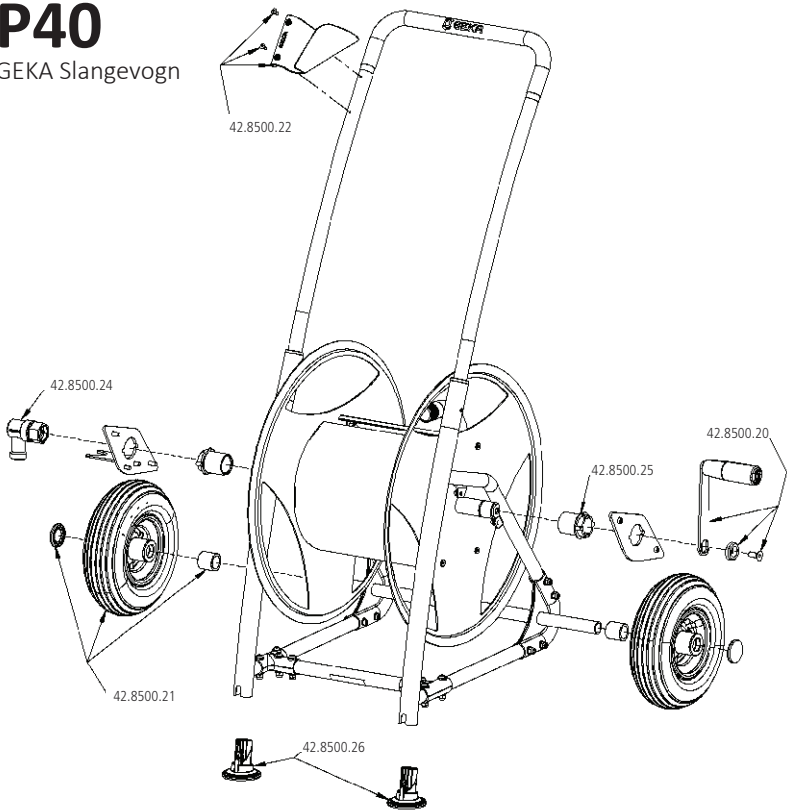
For Item no. 42.8501.9, 42.8506.9



Item no.	Denomination
42.8501.20	Crank set
42.8501.21	Wheel 148x38 with wheel cap
42.8501.22	Wheel fastening, 2 pieces
42.8501.23	Handle fastening, 2 pieces
42.8500.22	Accessory rack plastic
42.8500.26	Toes, 2 pieces

P40

GEKA Slangevogn



For Catalogue no. 8502SB
For Item no. 42.8502.9



Item no.	Denomination
42.8500.20	Crank set
42.8500.21	Wheel 210x65 with wheel cap
42.8500.22	Accessory rack plastic
42.8500.24	Rotary fitting 3/4" brass
42.8500.25	Spindle ball bearing, 2 pieces
42.8500.26	Toes, 2 pieces



Agrometer

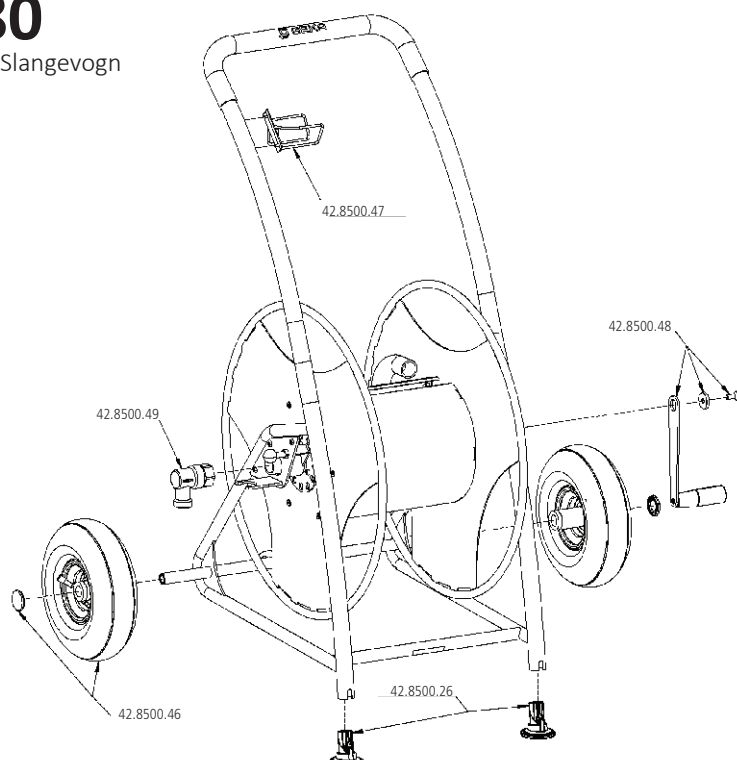
Agrometer a/s
Fælledvej 10
DK-7200 Grindsted
agrometer@agrometer.dk

GEKA Slangevogn

Reservedelsoversigt

P80

GEKA Slangevogn



For Catalogue no. 8503SB
For Item no. 42.8503.9

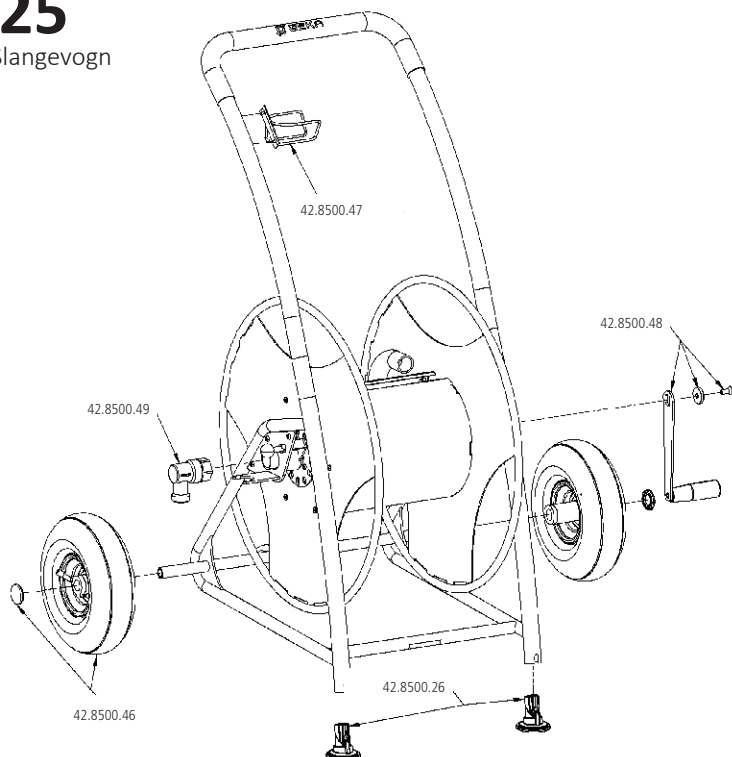


Item no.	Denomination
----------	--------------

42.8500.26	Toes, 2 pieces
42.8500.46	Wheel 260x85 with wheel cap
42.8500.47	Accessory rack metal
42.8500.48	Crank set
42.8500.49	Rotary fitting 1" brass

P125

GEKA Slangevogn



For Catalogue no. 8504SB
For Item no. 42.8504.9



Item no.	Denomination
----------	--------------

42.8500.26	Toes, 2 pieces
42.8500.46	Wheel 260x85 with wheel cap
42.8500.47	Accessory rack metal
42.8500.48	Crank set
42.8500.49	Rotary fitting 1" brass



Agrometer

Agrometer a/s
Fælledvej 10
DK-7200 Grindsted
agrometer@agrometer.dk

GEKA Slangerulle

Reservedelsoversigt

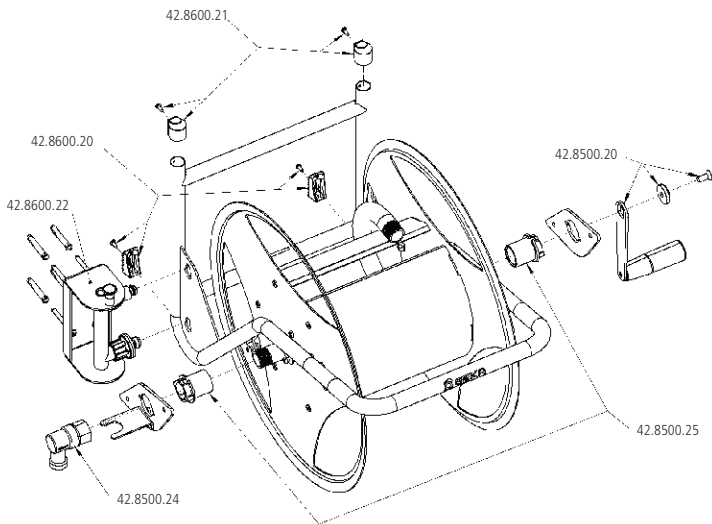
P40

GEKA Slangerulle til væg

For Catalogue no.	8602SB
For Item no.	42.8602.9



Item no.	Denomination
42.8500.20	Crank set
42.8500.24	Rotary fitting 3/4" brass
42.8500.25	Spindle ball bearing, 2 pieces
42.8600.20	Toes with screws, 2 pieces
42.8600.21	Caps and screws, 2 pieces
42.8600.22	Wall mount



Agrometer

Agrometer a/s
Fælledvej 10
DK-7200 Grindsted
agrometer@agrometer.dk