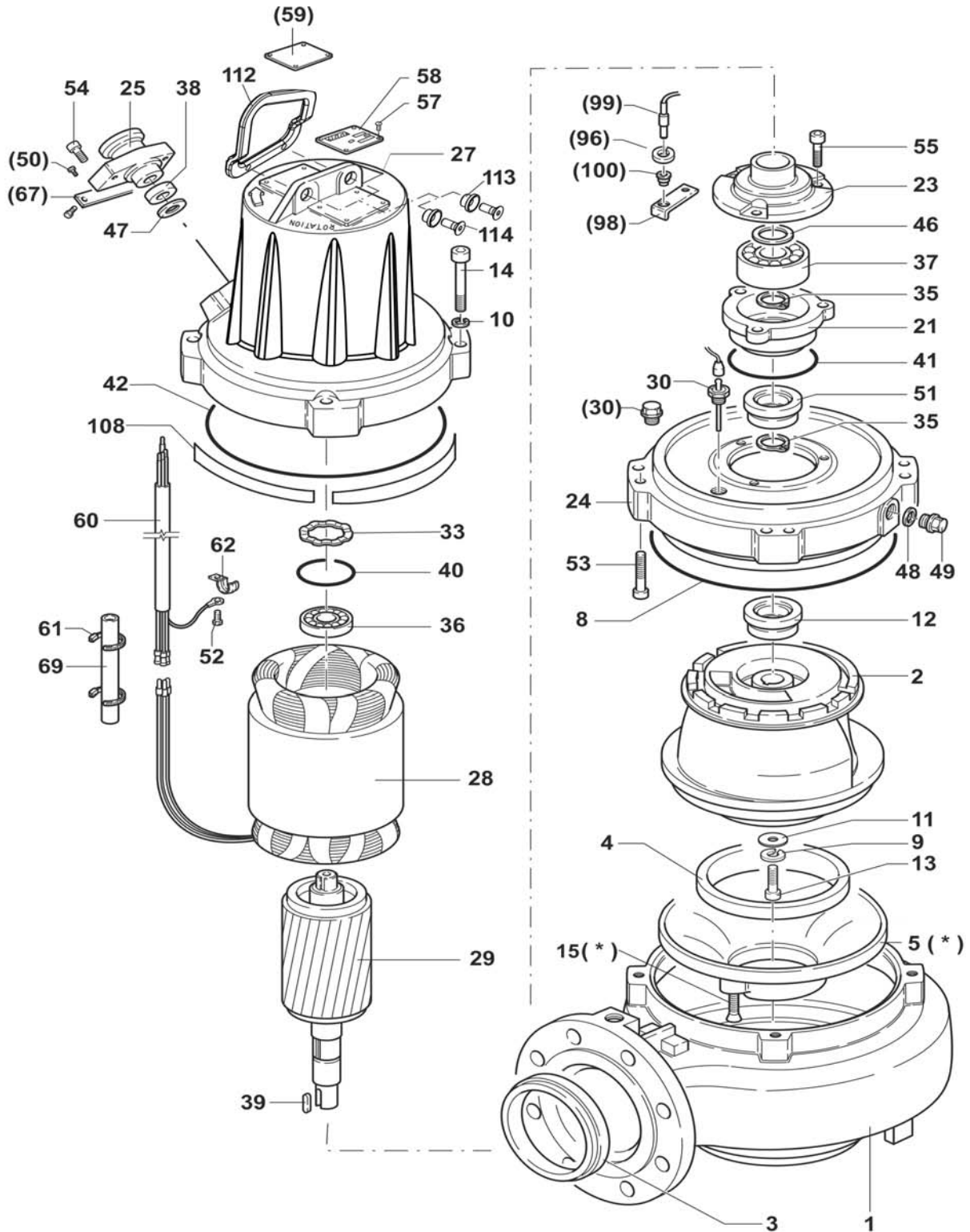


## 861647 - KCM080LG+005522N1 EFFLUENT SUBMERSIBLE PUMP



( ) PARTICOLARI PER VERSIONE ANTIDEFLAGRANTE

( ) COMPONENTS FOR VERSION FLAMEPROOF

( ) COMPONENTES PUR VERSION ANTIDEFLAGRANTE

( ) POR EJECUCION COMPONENTES ANTIDEFLAGRANTE

(\*) PARTICOLARI PER VERSIONE 60 Hz...150L...

(\*) COMPONENTS FOR 60 Hz...150L...

(\*) COMPONENTES PUR VERSION 60 Hz...150L...

(\*) POR EJECUCION 60 Hz COMPONENTES...150L...

TAV 344C



## COMPONENTS LIST

Pos.	Code	Serial N°	Description	Qty
	1000826			1 PZ
1	500280	KM080L-1	DELIVERY CASING	1 PZ
2	470134	KMFLNG-5	IMPELLER D.160	1 PZ
3	330617	KMF-146	GASKET FOR FLANGE	1 PZ
4	440530	P8CV-165	WEAR RING	1 PZ
8	330386	OR01932	OR SEAL 278,99X3,53 OR41100(AP)	1 PZ
9	300892	RE01913	SPRING WASHER A 10 UNI1751-A2	1 PZ
10	300892	RE01913	SPRING WASHER A 10 UNI1751-A2	6 PZ
11	310340	RLS02581	WASHER	1 PZ
12	330200	TFR02124	MECHANICAL SEAL BT-AR35-Q1VPFF	1 PZ
13	300241	VTT01936	SCREW M10X30 UNI 5931 A4-80	1 PZ
14	300245	VTT02121	SCREW M10X90 UNI5931-A2	6 PZ
	1000816			1 PZ
21	400535	KC090/EX-4	BEARING HOUSING	1 PZ
23	410685	KC090/EX-9	BEARING COVER	1 PZ
24	420028	KC04041L/EX-22	OIL CHAMBER	1 PZ
25	440855	KC0904/EX-183	CABLE GLAND	1 PZ
27	470490	K4L/200/1-260	MOTOR CASING	1 PZ
28	470666	K005522/200/1-262	STATOR	1 PZ
29	470716	K00552L/200/1-265	SHAFT WITH ROTOR	1 PZ
30	470922	KC018/E-270	PROBE	1 PZ
33	310517	AE02411	CIRCLIP ART.012 72B	1 PZ
35	310554	AE0350	CIRCLIP 35 UNI 7435 FOR SHAFT	2 PZ
36	350012	CSN01946	BEARING 6306-ZJ/C3(METAL CAGE)	1 PZ
37	350113	CSN0943	BEARING 3307/C3	1 PZ
38	330703	GN02075	GASKET 22,8X40X26	1 PZ
39	310435	LCH0933	FEATHER KEY A8X7X40 UNI6604-C50	1 PZ
40	330383	OR01929	OR SEAL 71,44X3,53 OR174 (AP)	1 PZ
41	330381	OR01915	OR SEAL 82,22X2,62 OR3325 (AP)	1 PZ
42	330385	OR01931	OR SEAL 266,07X5,34	1 PZ
46	310349	RLS01788	WASHER 35X45X2,5 SEEGER TYPE SS	1 PZ
47	310291	RLS02078	WASHER 23,8X38X3	1 PZ
48	310270	RLS01907	WASHER 14X18X1,5	4 PZ
49	310694	TF01908	PLUG 1/4"GAS	2 PZ
51	330193	TFR01934	MECHANICAL SEAL BT-AR35-BXPFF	1 PZ
52	300211	VTT01919	SCREW M6X10 UNI 7687-4.8	2 PZ
53	300243	VTT02063	SCREW M10X40 UNI5931-A2	6 PZ
54	300227	VTT02062	SCREW M8X25 UNI5931-A2	2 PZ
55	300228	VTT02064	SCREW M8X40 UNI 5931-8.8	3 PZ
60	840334	CTA12X2,5/EX/RIC	CABLE REPLACEMENT KIT	1 PZ
61	310504	FS01985	CLAMP 203X3,4 CL.F(PLT2I/M76 PANDUIT)	2 PZ
62	310503	FS01984	CLAMP D.20 (ART.50815 GEWIS)	1 PZ
69	350521	301S2208	INSULATING SHEATH VES25 20X120 (COVEME)	1 PZ
102	300878	RE0425	SPRING WASHER A 6 UNI1751-C70	1 PZ
112	470590	K4L/200-269	LIFTING EYE	1 PZ
113	310264	RLS02408	WASHER	2 PZ
114	300069	VTT02412	SCREW M10X30 UNI5933 A2-70	2 PZ

